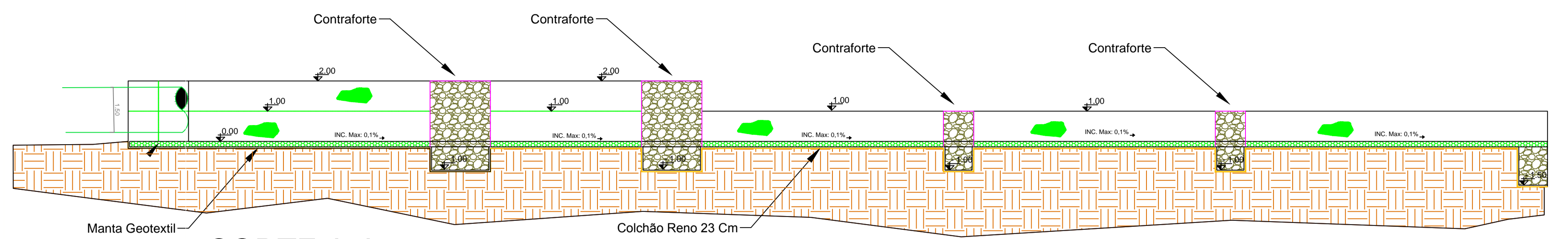
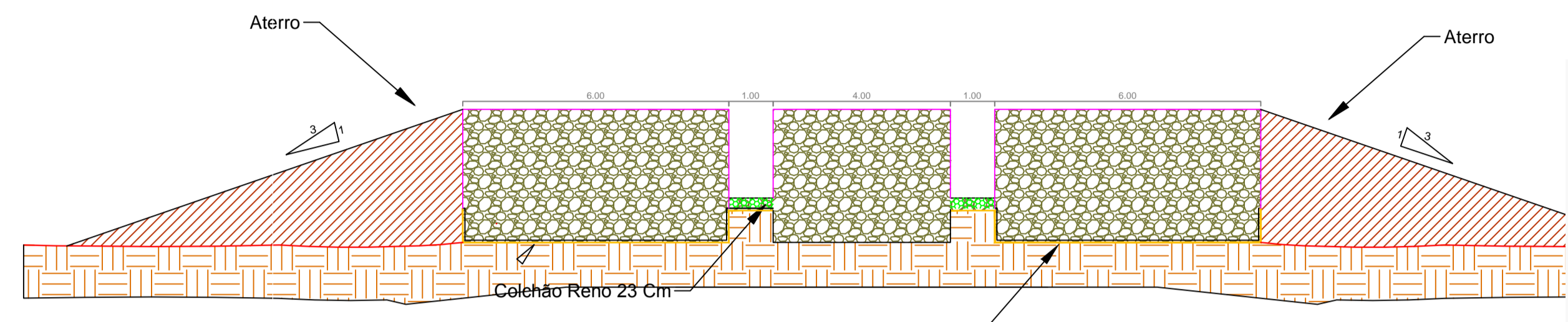


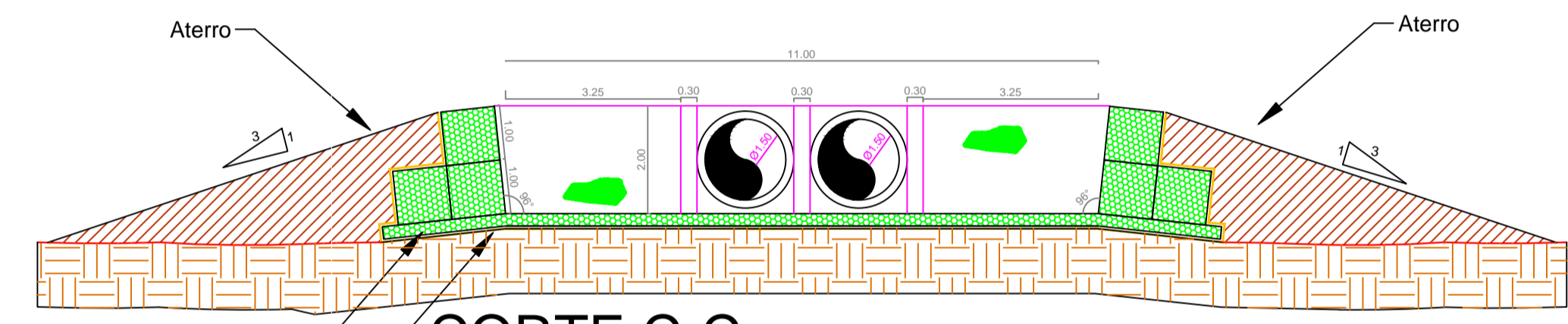
PLANTA BAIXA
ESC: 1/100



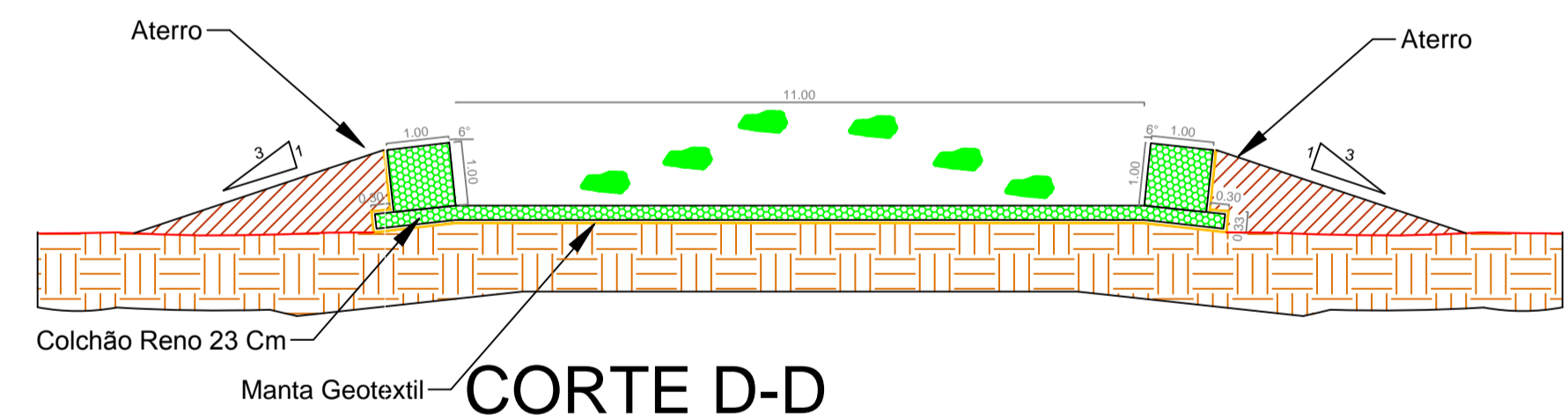
CORTE A-A
ESC: 1/100



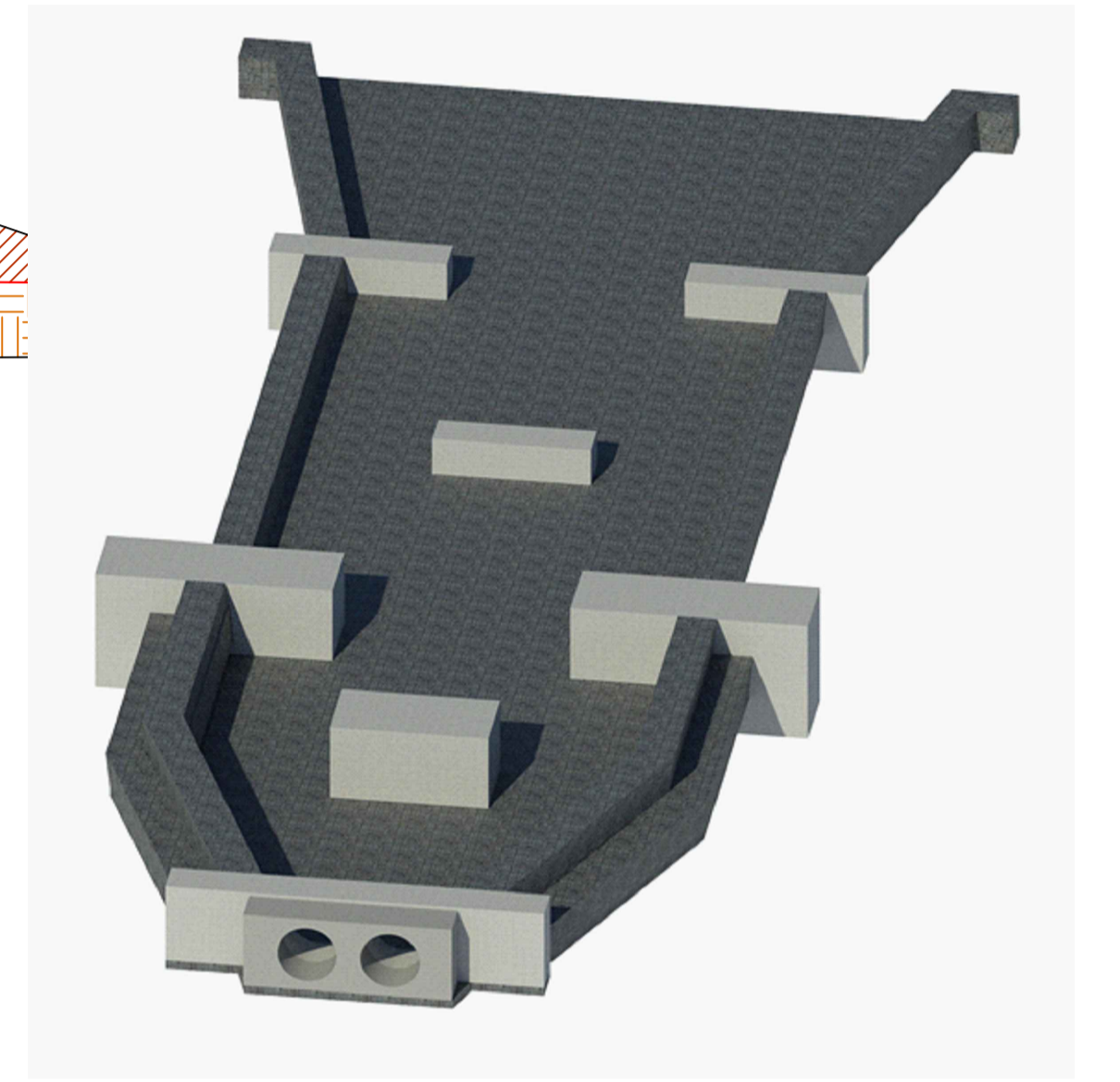
CORTE B-B
ESC: 1/100



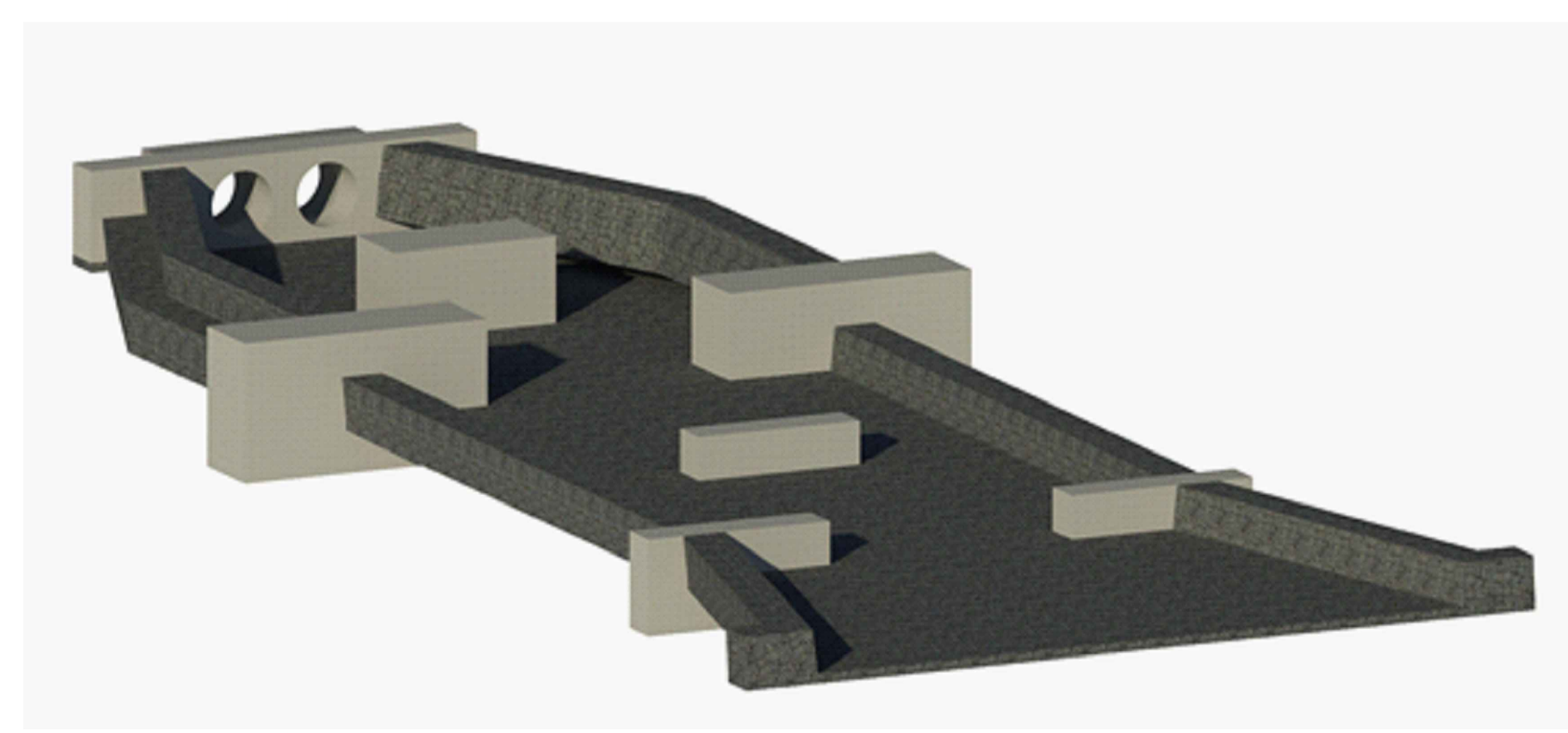
CORTE C-C
ESC: 1/100



CORTE D-D
ESC: 1/100



PERSPECTIVA 02



PERSPECTIVA 01

PALMAS - TO		
TAQUARI - QD T33		
REDE 71 (T32-T33) PROJETO GABIÃO		
REVISÃO 01 04 DE FEVEREIRO DE 2019		ESCALA: INDICADAS
CONTEÚDO: PLANTA DE DETALHAMENTO DISSIPADOR E GABIÃO CORTE LONGITUDINAL CORTES TRANSVERSAIS		APROVAÇÃO:
PROPRIETÁRIO(A) PREFEITURA MUNICIPAL DE PALMAS		
AUTOR PROJETO: RT: JOSIAS ASCYER SANTOS MENDES BORGES ENGENHEIRO CIVIL CREA: 205.093 D/TO		
MENDES & BORGES ENGENHARIA LTDA-ME ENG. CIVIL E TEC. EM AGRIMENSURA JOSIAS ASCYER BORGES CREA: 205.093 D/TO CNPJ: 17.342.273/0001-17 (63) 9 9955-3395 / JOSIAS@MENDESORGES.COM (63) 9 9953-1513 / MARCELO@MENDESORGES.COM		

