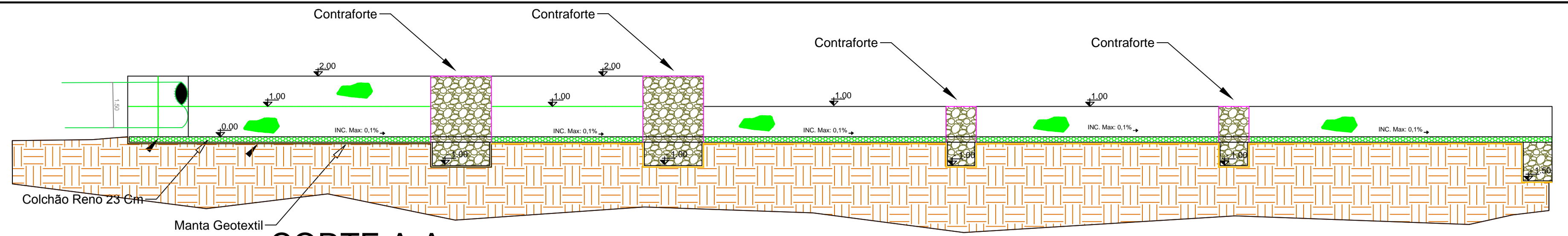
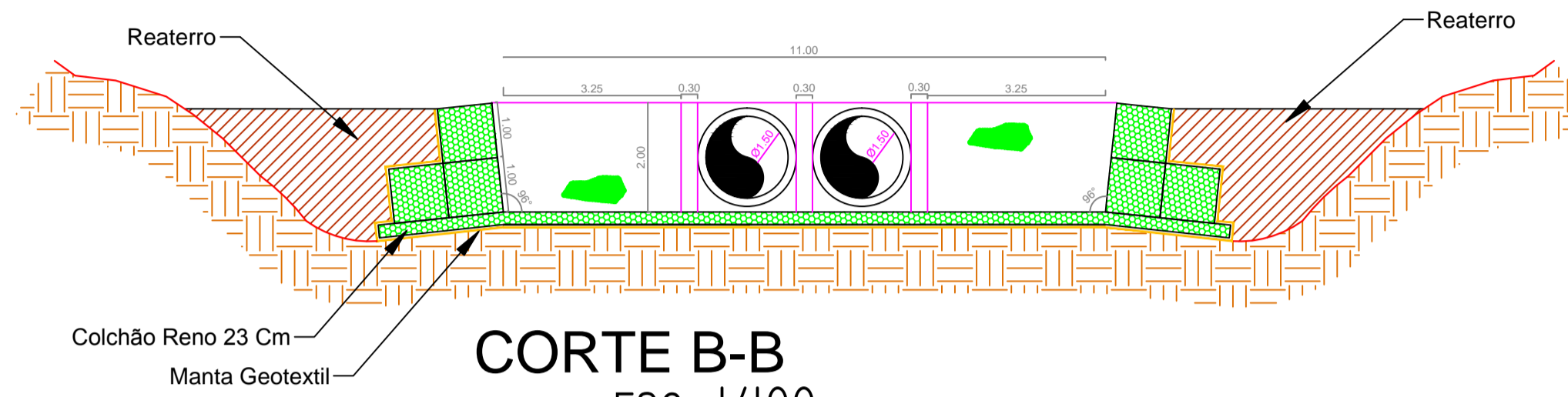


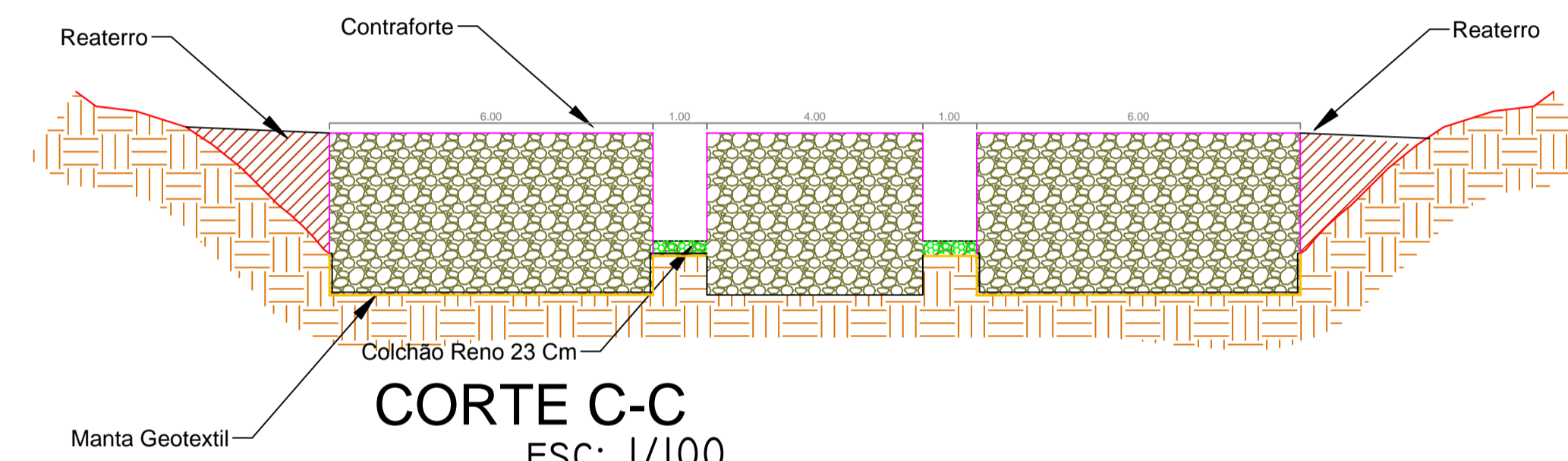
PLANTA BAIXA  
ESC: 1/100



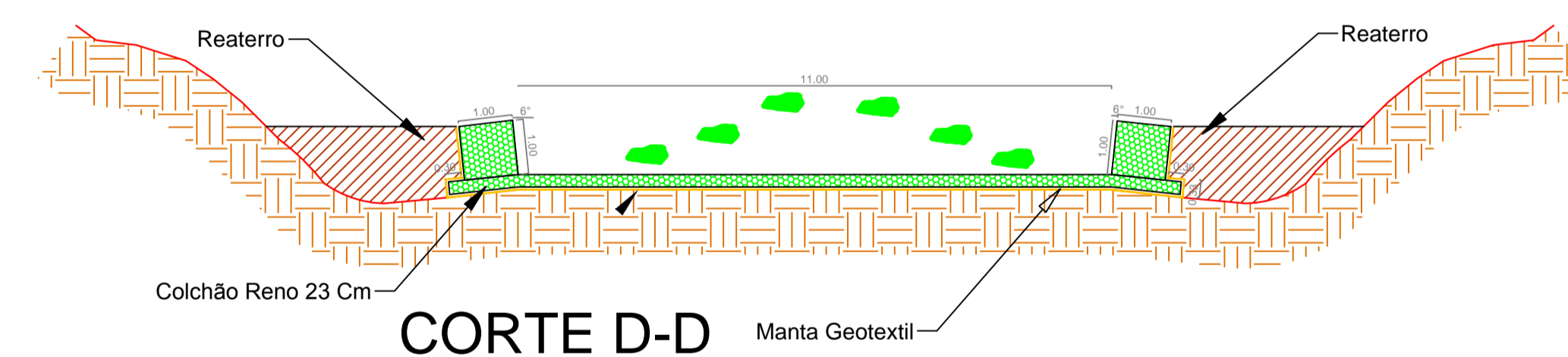
CORTE A-A  
ESC: 1/100



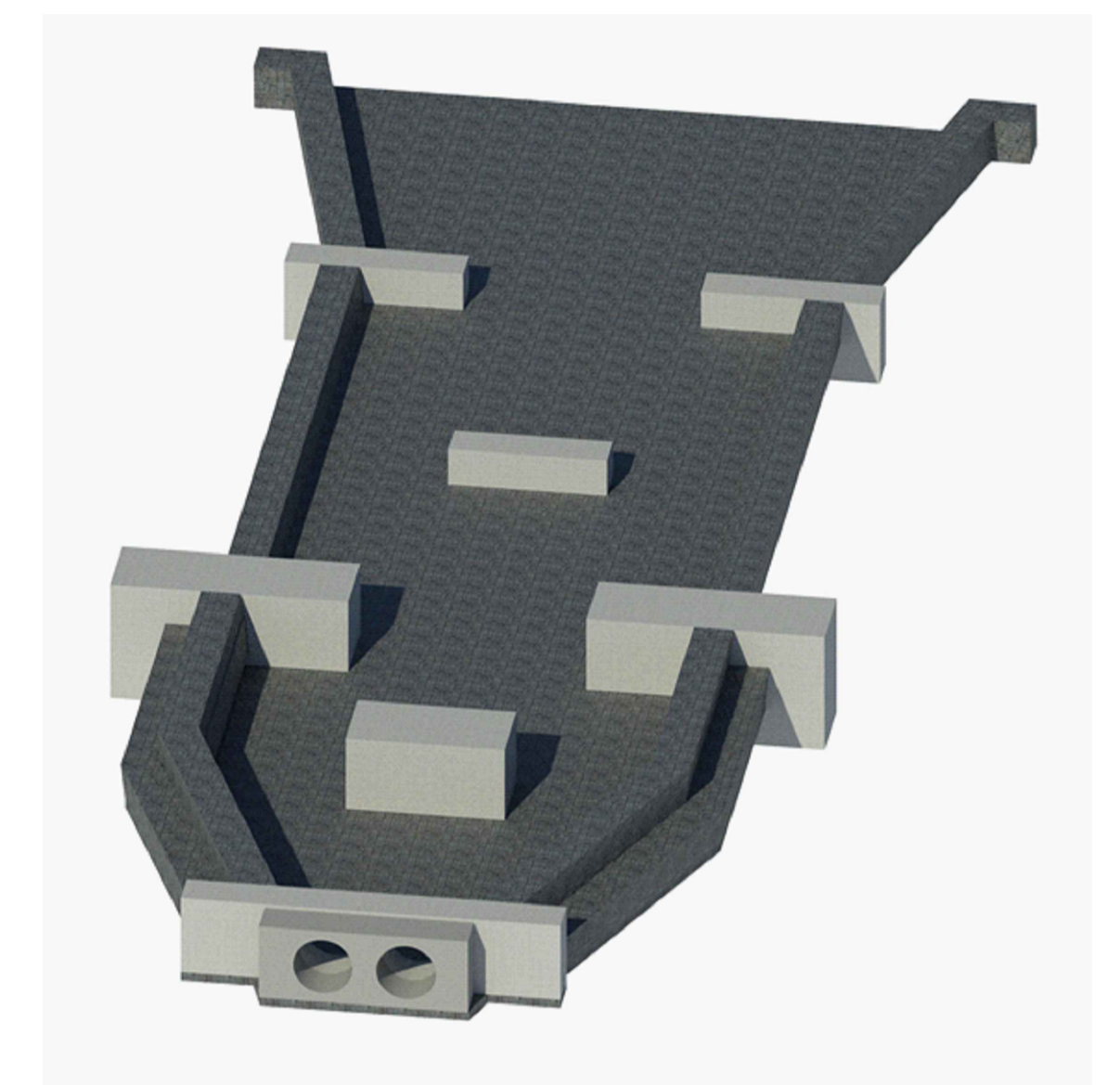
CORTE B-B  
ESC: 1/100



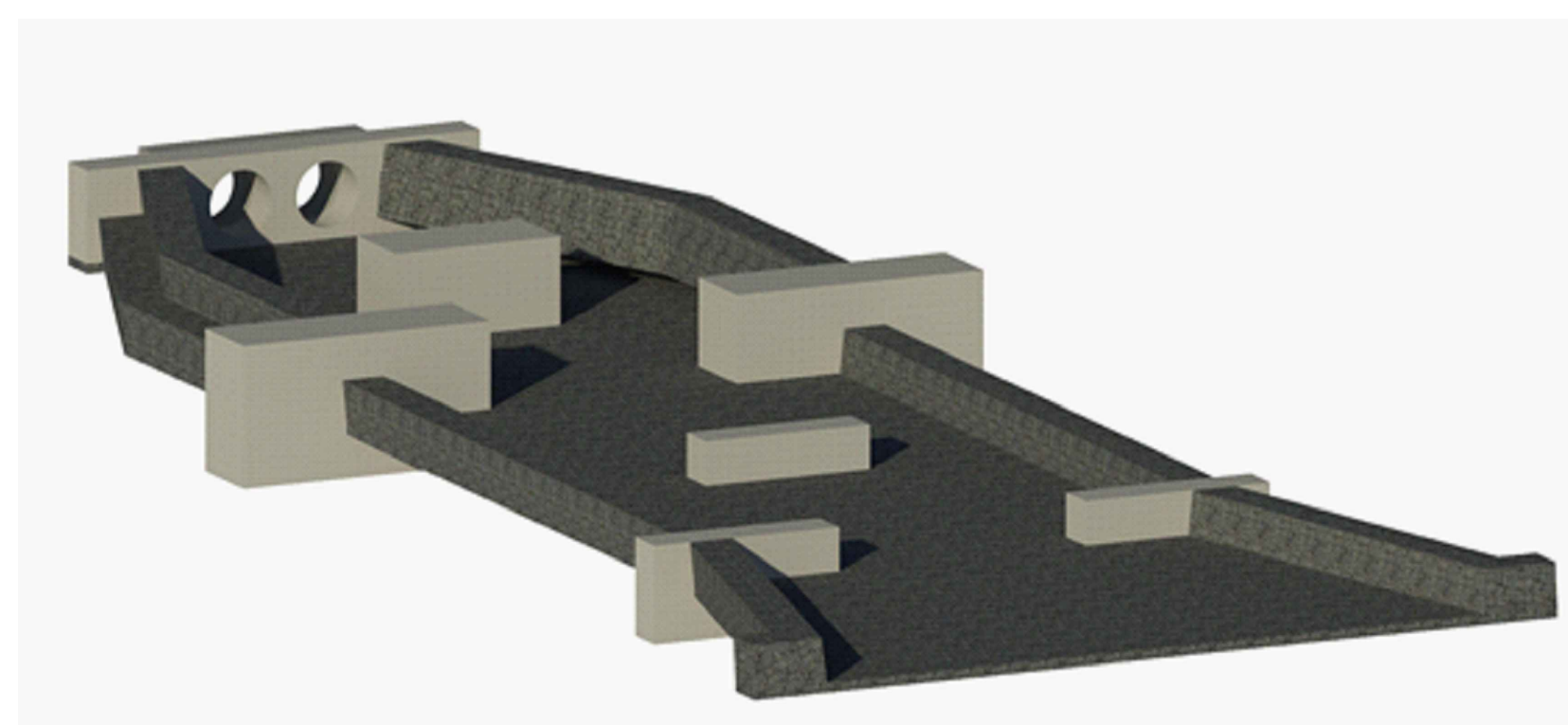
CORTE C-C  
ESC: 1/100



CORTE D-D  
ESC: 1/100



PERSPECTIVA 02



PERSPECTIVA 01

|  |  |   |
|--|--|---|
| PALMAS - TO  |  |   |
| TAQUARI - QD T32   |  |   |
| REDE 58 (T32-T33)<br>PROJETO GABIÃO  |  |   |
| REVISÃO 01<br>04 DE FEVEREIRO DE 2019  |  | AUTOR DESENHO:<br>JOSIAS BORGES<br>FONE: (63) 9955-3395<br>ESCALA:<br>INDICADAS |
| CONTEUDO:<br>PLANTA DE DETALHAMENTO<br>DISSIPADOR E GABIÃO<br>CORTE LONGITUDINAL<br>CORTE TRANSVERSAIS   |  | APROVAÇÃO:<br><br>PROPRIETÁRIO(A)<br><br>PREFEITURA MUNICIPAL DE PALMAS         |
| AUTOR PROJETO:   |  | RT: JOSIAS ASCYER SANTOS MENDES BORGES<br>ENGENHEIRO CIVIL CREA: 205.093 D/TO   |
| MENDES & BORGES ENGENHARIA LTDA-ME<br>ENG. CIVIL E TEC. EM AGRIMENSURA JOSIAS ASCYER BORGES<br>CREA: 205.093 D/TO<br>CNPJ: 17.342.273/0001-17<br>(63) 9 9955-3395 / JOSIAS@MENDESORGES.COM<br>(63) 9 9953-1513 / MARCELO@MENDESORGES.COM |  |   |

